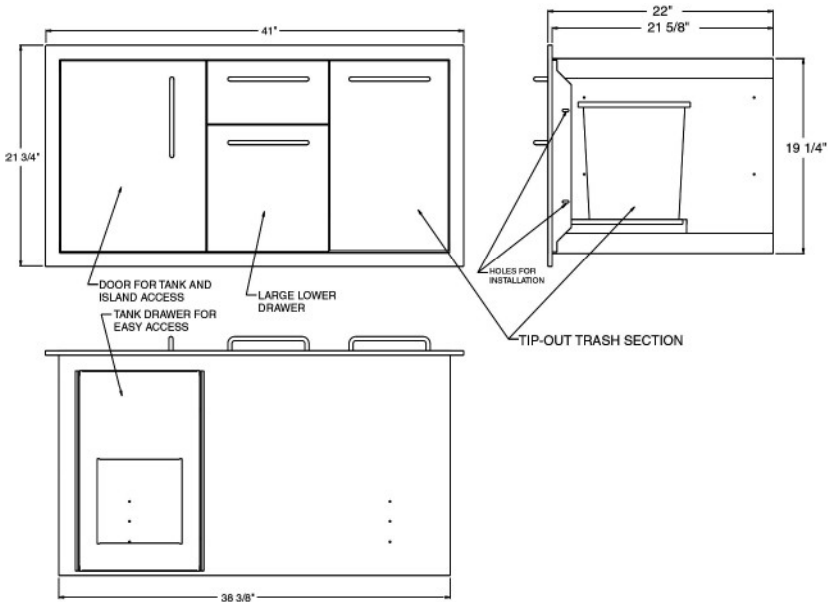
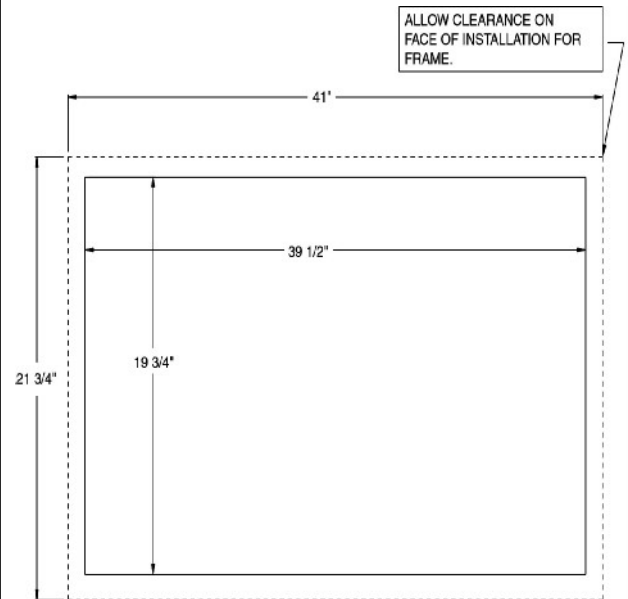


SPECIFICATIONS FOR OCI-41CU (41" COMBO UNIT)

GENERAL DIMENSIONS:



CUTOUT DIMENSIONS FOR BUILT IN APPLICATION:



Standard Features

- 304 Non-rusting and Non-magnetic stainless steel construction.
- High Quality drawer slides with full extension for easy operation.
- 2 Drawers, 1 tip out trash can and 1 door with tank slider.
- Ventilated tank section
- Easy installation with leveling bracket.
- Fully Assembled.

Warranty

- 1-Year Full replacement Warranty on all components due to manufacturer defects in craftsmanship.
- 5-Year Warranty on all Stainless Steel Parts.

Stainless Steel drawer sets are covered for 1 full year from date of purchase, and 5 full years on all stainless steel parts only by defects in workmanship. A copy of the original receipt is required for all warranty claims. Please keep a copy of this handout along with original receipt for your files.

- Shipping weight of OCI-41CU (140 lbs.)

PLEASE NOTE:

*Because of continuing product improvement these specifications are subject to change without notice.